

Ashton Parish Council

Speed Sign Report

Meeting 19th May 2021

Prepared by Cllr Roychoudhury

Updated Speed Data Report.

For the 6 months March 2021 Speed Sign was located at entrance to Bozenhamill Road. Location 2; Lamp Post 15. Excess speed was not excessive (27%) with the majority falling in the 30-35 class.

For the month of April the speed sign was located at the top of Roade Hill near Hill Top. Location 2; Lamp Post 1. Speed excess was very excessive at 70% of car volume. Speed sign appears to have little impact on slowing cars down as they became aware through month.

Speed sign was moved on the 1st May 2021 to Stoke Road entrance to village near the rugby club. Location 4; Lamp Post 1

Please see report for further details.

Speed Signs Report for Meeting 19th May 2021

1) Speed Analysis 18^h August 2020 to 3rd March 2021 Location 2

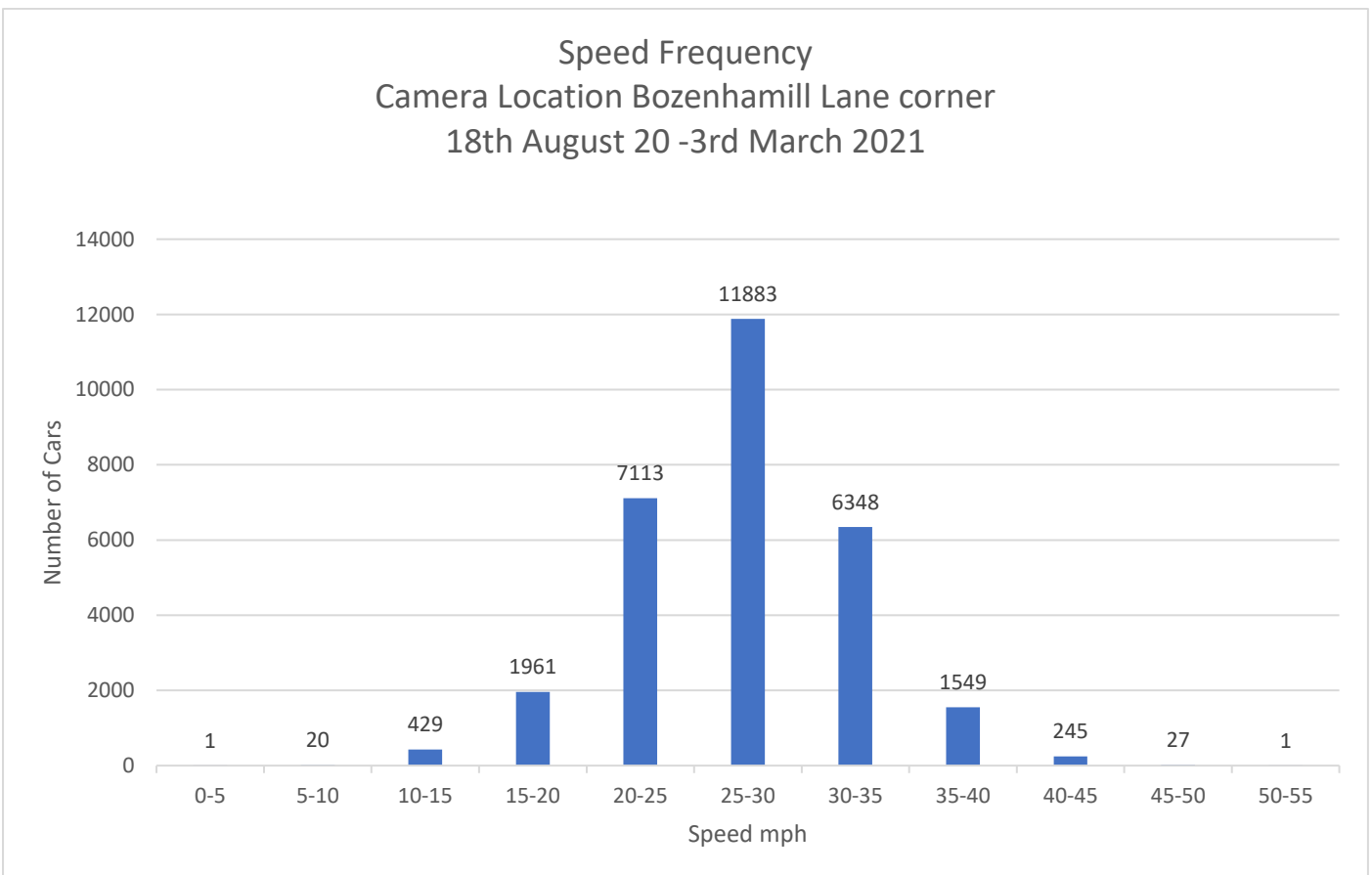
The Speed sign was located at the junction of Bozenhamill Road and Hartwell Road.

This data analysis is for the date range 18^h August 2020 to 3rd March 2021. (197days; 6M 16 days)

Speed Break Down %

Speed	No. of Cars	%
0-5	1	0.00%
5-10	20	0.07%
10-15	429	1.45%
15-20	1961	6.63%
20-25	7113	24.05%
25-30	11883	40.18%
30-35	6384	21.46%
35-40	1549	5.24%
40-45	245	0.83%
45-50	27	0.09%
50-55	1	0.00%

Graph of Speed breakdown



Speed Signs Report for Meeting 19th May 2021

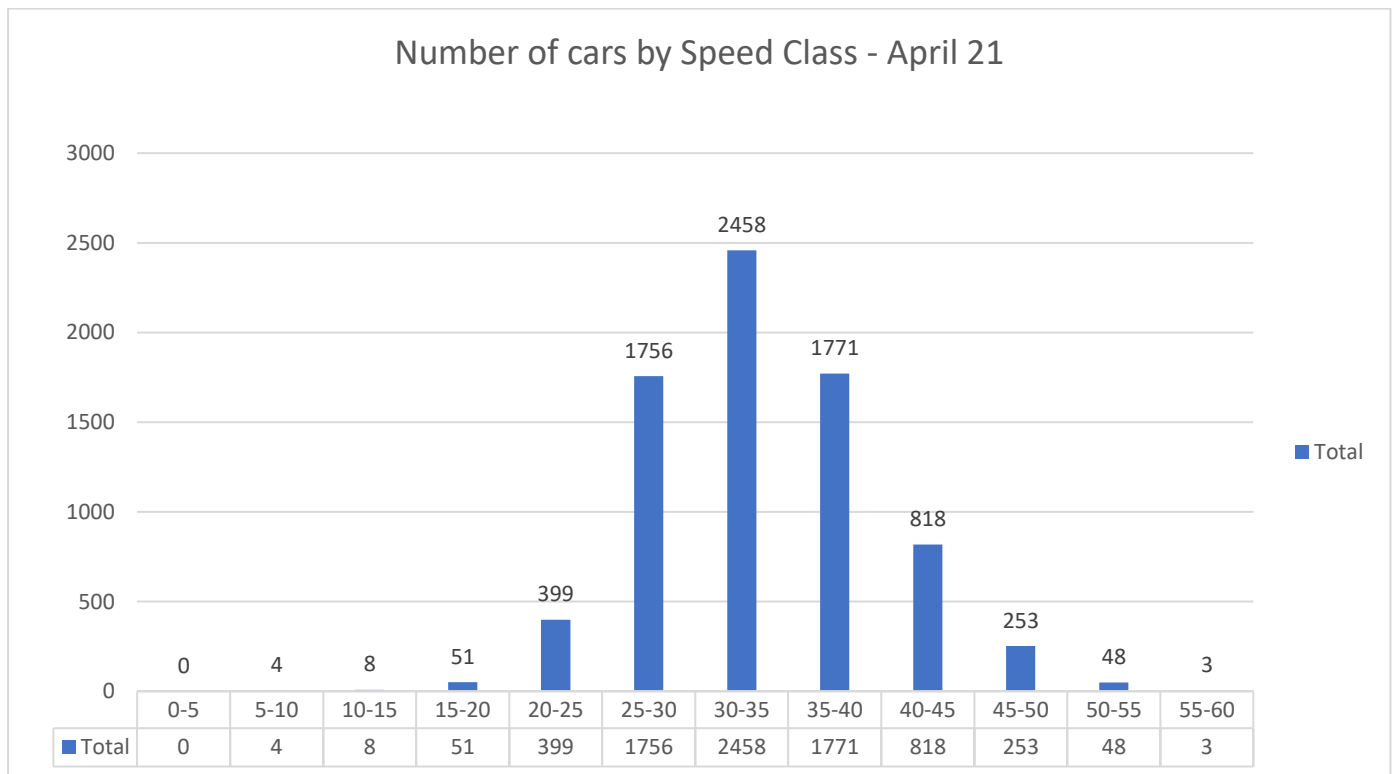
2) Speed Analysis 1st^h to April 30th 2021

Speed sign was located at entrance to village along Stoke Road

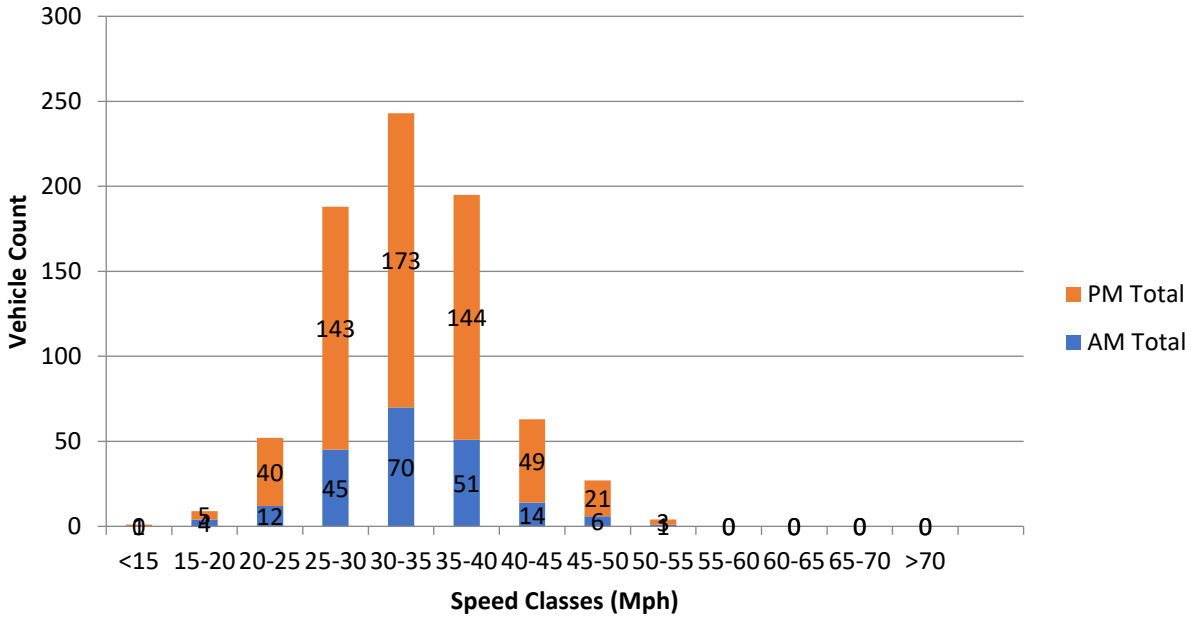
Speed analysis are shown below in Table 2 and weekly charets for the period 1st-30th April 2021

Speed	APRIL 1 -30 2021					Total	%
	1-4	5-11	12-18	19-25	26-30		
0-5	0	0	0	0	0	0	0%
5-10	1	0	1	1	1	4	0%
10-15	1	2	3	1	1	8	0%
15-20	9	14	11	11	6	51	1%
20-25	52	82	88	111	66	399	5%
25-30	188	330	452	486	300	1756	23%
30-35	143	496	678	685	456	2458	32%
35-40	196	325	453	483	314	1771	23%
40-45	63	163	227	187	178	818	11%
45-50	27	52	62	63	49	253	3%
50-55	4	3	20	9	12	48	1%
55-60	0	0	1	1	1	3	0%
Total Cars						7569	

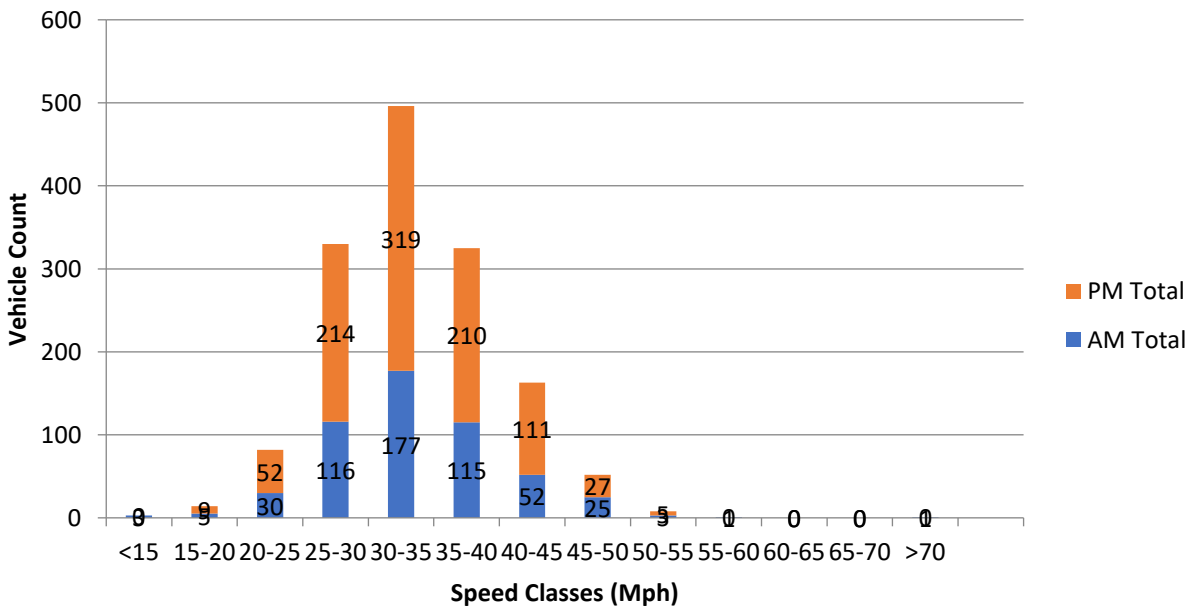
Table 2 – April 21 - Number of cars for each speed class range per date range



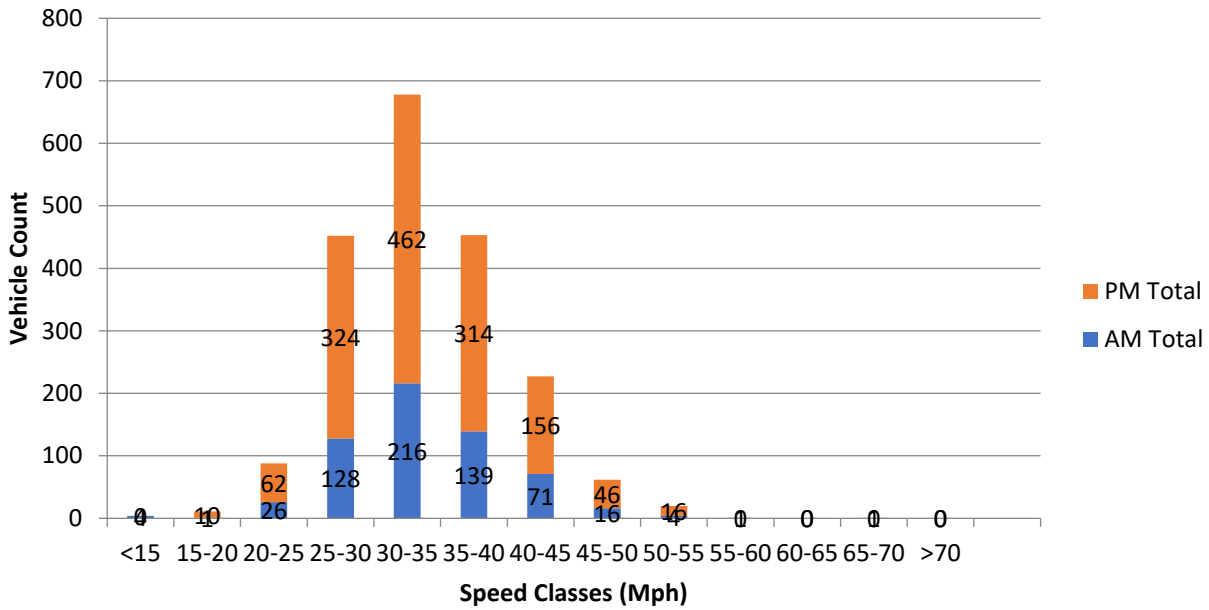
Vehicle Count by Speed Class For week Ending April 4th 2021



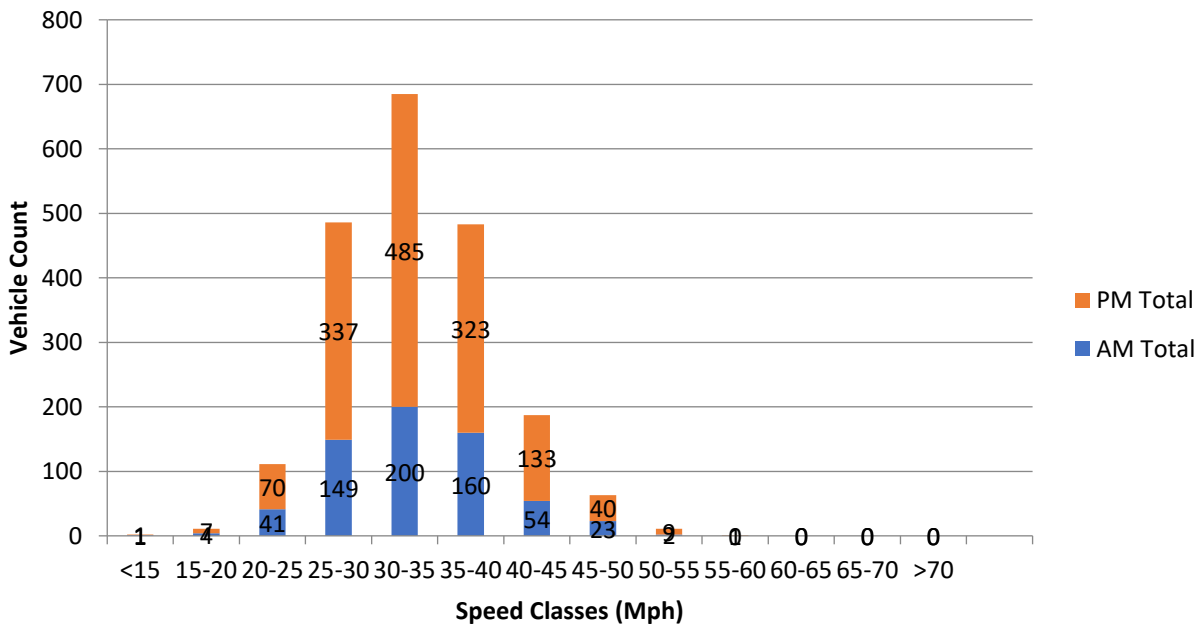
Vehicle Count by Speed Class For week beginning Mon Apr 5 2021



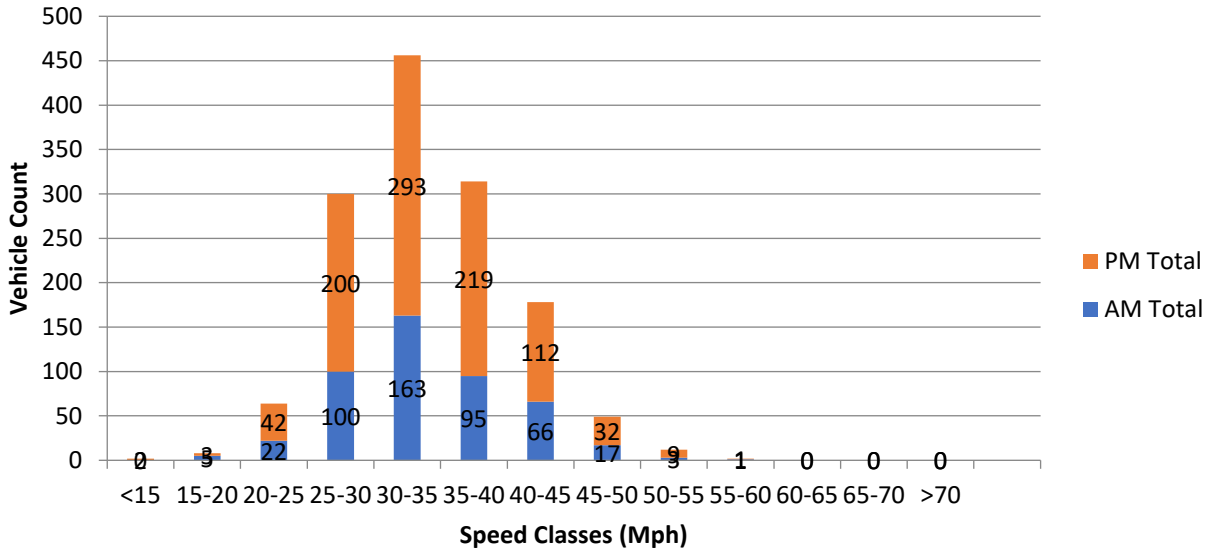
Vehicle Count by Speed Class For week beginning Mon Apr 12 2021



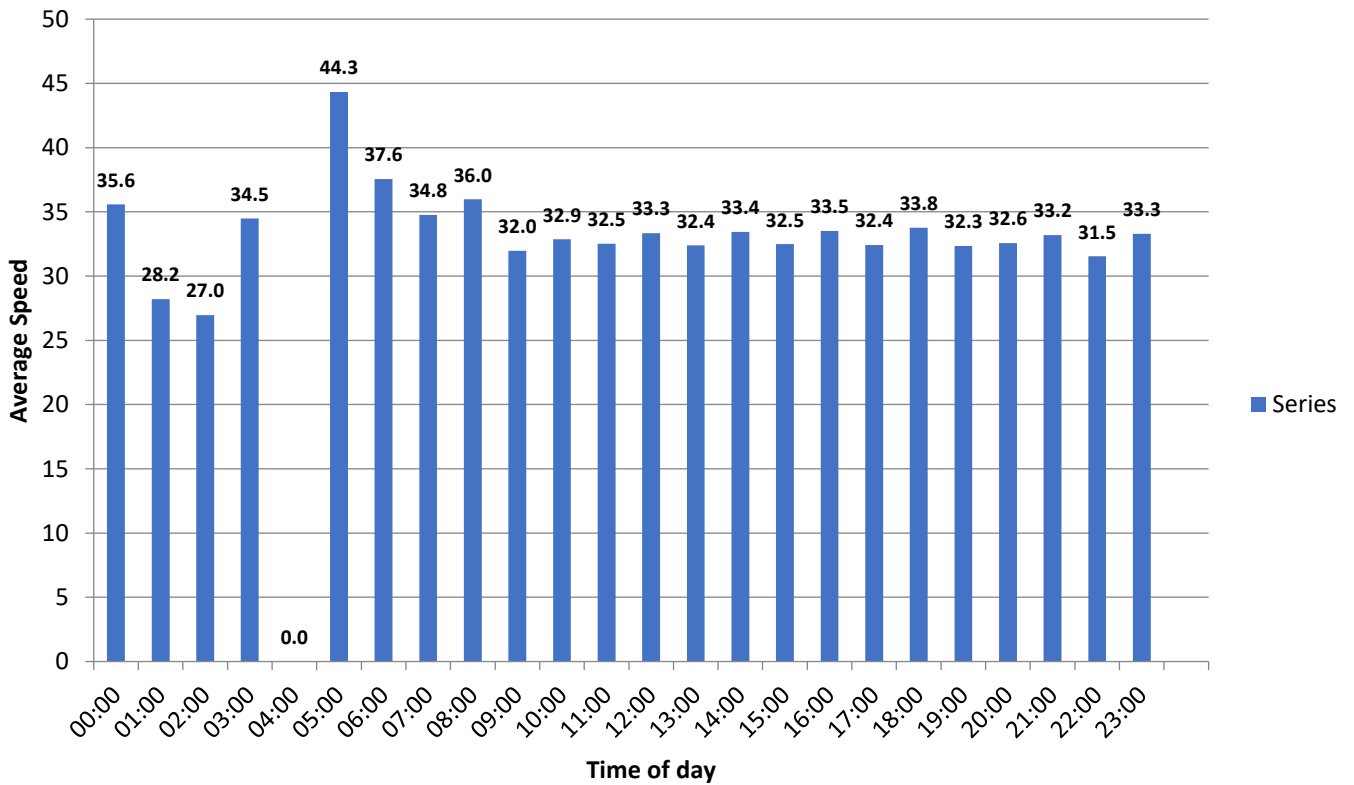
Vehicle Count by Speed Class For week beginning Mon Apr 19 2021



Vehicle Count by Speed Class For week beginning Mon Apr 26 2021



Average speed by hour for Apr 2021



Speed Sign Locations

There are five speed sign locations. Each speed sign location is mounted on a lamp post. The lamppost location provides a power supply to the speed sign. This is backed up by internal rechargeable batteries.

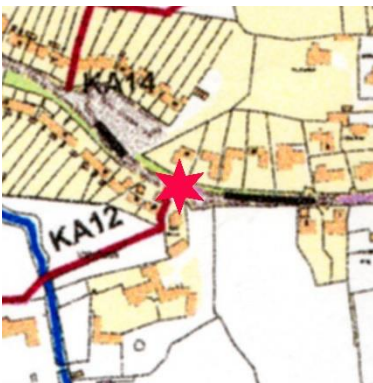
Location 1 Little Ashton facing NE out of village ; Lamp Post 19



Location 2 Corner of Bozenhamill Rd and Hartwell Rd facing NE out of Village; Lamp Post 15



Location 3 Stoke Rd entrance of Vale Farm facing West; Lamp Post 5



Speed Signs Report for Meeting 19th May 2021

Location 4 Stoke Road near Rugby Club facing West: Lamp Post 1



Location 5 Top of Road hill near Hilltop facing North; Lamp Post 30



Available Speed Sign Locations - Street Lamp Positions and number

